



# Mid-Year Check-In

Measures Taken To Support the Auburn  
Public Schools through Covid-19

---

Presented by the  
Auburn Public Schools Nursing  
Department



February 3, 2021

# Auburn Public Schools- Hybrid Learning

- Our in-person learning model is made possible by a collaboration of multiple departments within the Auburn Public School District.
- These departments include: School Administration, Faculty, Nursing, Physical Plant, Instructional Technology, and Support Staff, as well as our Department of Health and Inspectional Services, Massachusetts Department of Elementary and Secondary Education , and the Massachusetts Department of Public Health.
- It is through our joint efforts that we are able to provide our children the opportunity of in-person learning. The Nursing Department would like to share with you the measures we take for our school community on a day-to-day basis.

## Readiness Guide- Nursing Protocols

- The town's "Return to School Committee" including district nurses, faculty, parents, and students worked over the summer to create a "Reopening and Readiness" document to guide the district's reopening. This guide includes information to get faculty, staff, and children safely back into schools in accordance with guidance and requirements from the organizations listed on the previous slide.
- As guidance from the Centers for Disease Control evolved, and in concert with recommendations from our town's office of health and inspectional services, protocols are updated to reflect the most current guidance. To access the "Reopening and Readiness" guide, please click here: [Auburn Readiness Guide](#) .

## Auburn Office of Health and Inspectional Services



- Weekly collaboration takes place with our school administration, Nurse Leader, and Directors of the Auburn Office of Health and Inspectional Services. They assist school administration and nurses with in-school protocols, public health initiatives, and implementation of new guidance from the Centers for Disease Control and Massachusetts Department of Public Health.
  - The nurse leader receives frequent reports from the Office of Health and Inspectional Services of confirmed COVID positive cases so we may cross check school data.
-

# Sanitation, Hygiene, Distancing

## Measures Taken

- Face Masks
- Hand Sanitation
- Building Sanitation
- Social Distancing
- Air Quality Improvement
- Spacing on Busses
- Hybrid Cohorts
- Smaller Classroom Sizes
- Staff and Family Education

## Implementation

A 2-ply disposable or cloth face covering is required for school. Each health office is supplied with backup masks should a child or staff member need one. Classrooms are cleansed thoroughly daily, and receive a deep cleaning on Wednesdays and Saturdays. Air purification filters have been placed in each classroom. Hand washing and sanitation stations are available throughout our buildings. Desks are spaced, class sizes are reduced, and hallways are either split, or traffic flow is directed to allow for social distancing in the buildings. Families and staff are educated on the latest guidance from the Centers for Disease Control.

# Air Quality Improvement

- Each of our classrooms and nursing offices have been outfitted with a Atmos Bi-Polar Ionization Air Purification unit to ensure consistent high quality air purification throughout our district. More detailed information can be found on our district website and facebook page.
- The patented ionization tubes within the unit clean the air without utilizing unsafe chemicals or creating any unwanted byproducts. AtmosAir seeks out contaminants in the air and neutralizes them and will eliminate or reduce toxic mold, volatile organic compounds, bacteria, dust particles and odors in indoor spaces.



# ZippSlip- Attendance Attestation Form

The ZippSlip attestation form is the first line of defense for the Auburn Public Schools (and it works). Each morning, students and staff complete a secured, online attestation form. The form asks questions related to health, current symptoms/illness, recent travel, symptomatic household members, and if they are a close contact to a confirmed positive case.

The screening questions below **MUST** be completed prior to the start of each school day for all staff. Please remember, if you do not feel well, you should stay home to ensure there are no COVID-19 symptoms present.

1. **IN THE LAST 24 HOURS**, have you experienced any of the following symptoms that are not otherwise the result of a preexisting medical condition? Chills, Congestion or Runny Nose-not due to another chronic condition such as allergies, Cough-not due to another chronic condition, Diarrhea, Fatigue-When in combination with other symptoms, Headache-When in combination with other symptoms, Muscle pain-When in combination with other symptoms, Nausea or Vomiting, New Taste or Smell Disorder, Rash on Toes or Fingers, Shortness of breath or difficulty breathing, Sore throat, Temperature at or above 100 degrees F. \*

Yes  No

2. In the last 14 days have you been identified as a 'close contact' of someone who has tested positive for COVID 19? \*

Yes  No

3. Do you have a household member who is symptomatic and currently awaiting COVID 19 test results? \*

Yes  No

4. In the last 14 days have you traveled internationally or to a state NOT on the Massachusetts Safe Travel List? \*

Yes  No

5. I am an APS staff member and I will attend school today. \*

Yes  No

## ZippSlip- Attendance Attestation Form (How it Works)

- Nurses track slips each morning. Although we have a high compliance rate among our school community, we do contact families who have not completed a form. We also follow up on all instances of sickness, travel, identification as a positive case or close contact, or a person reporting sickness within a household.
- All case notes are managed securely by a nurse, and each family receives a follow up call or email to ensure protocols are understood. Cases are followed until we are able to provide clearance for a safe return to school date. Nurses collaborate to support faculty or students with in-district family members to ensure families are supported and advised on return to school dates. Furthermore nurses provide information on free testing sites, DPH documents, and their contact information for any other concerns.





## Case Investigation and Contact Tracing

- The Auburn Nurses work as a collaborative team to investigate, track and report each instance of sickness, travel, COVID positive case, or close contact case. ***The Auburn Nursing Department receives a report from the Auburn Board of Health on all positive case in order to cross check our data.***
- To date Auburn Nurses have investigated and resolved over 1800 cases. As of January 25th, 2021, this has resulted in the identification of 154 positive cases among our school community, and 334 close contacts. All cases were followed and supported by a school nurse.

## Reporting On Positive Cases

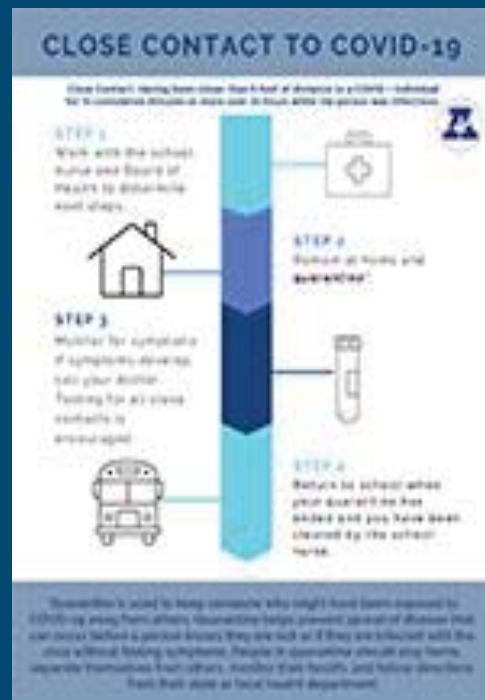
When a nurse has received notification of a positive case, contact tracing efforts are immediately completed. *In most cases, our positive community members have not been in the building in the last 48 hours.* Close contacts are typically not identified in school due to:

- ZippSlip forms prior to school arrival to account for symptomatic, close contact, and positive household cases.
- Early detection to ensure anyone meeting at risk criteria stays home.
- Quarantine/Isolation guidance provided immediately to anyone identified as a close contact.
- 6 feet spacing within the classrooms, cafeterias, and common areas.
- Smaller class sizes, reduced hallway traffic and bus capacity.
- Cohorts that have children in-person learning 2 days per week.
- Remote learning/working opportunities for students or staff awaiting clearance to return.

## How We Notify Our Community of Positive Cases

- Administration and the District Nurse Leader are notified immediately of any positive case, and the family is supported with education regarding symptoms, isolation requirements, and return to school dates. While maintaining confidentiality, close contacts are identified as applicable in each case, and provided with information regarding care management, quarantine requirements, and free testing locations.
- Dr. Handfield reports cases through a one-call email notification system to staff and families, and a dashboard of our data is available to the public [here](#).
- **The district lead nurse reports all positive cases to DESE on a weekly basis.**

# Staff and Family Education



Auburn nurses provide administrators, faculty, and families with the latest guidelines recommended by the Centers for Disease Control. We also create easy to read infographics, presentations, newsletters, and posters that are displayed throughout our building. Literature is emailed to all community members who report sickness, close contact, or travel. Nurses have held virtual town hall meetings, and are available via email or by phone during standard school day hours for any questions our school community members may have.

## We Are Auburn Strong!

The district's nurses continue to work together to support our staff, students, and families. We thank our the Office of Health and Inspectional Services for their continued support and guidance as we continue with our hybrid learning model. We also thank all of our teachers and staff for practicing social distancing, completing ZippSlips, wearing masks, cleaning, and for their flexibility. We are so fortunate to have children safely in our buildings! We are Auburn Strong!



---

# Nurses

Do you have a question related to a health matter? Ask a nurse!

**Leah Gauthier, District Nurse Leader**  
lgauthier@auburn.k12.ma.us

**Dottie LaBouef, AHS**  
ahsnurses@auburn.k12.ma.us

**Jo Truong, AHS**  
ahsnurses@auburn.k12.ma.us

**Karin Sjogren, AMS**  
ksjogren@auburn.k12.ma.us

**Shannon Palinkas, SWIS**  
spalinkas@auburn.k12.ma.us

**Kate Durgin, SWIS**  
kdurgin@auburn.k12.ma.us

**Marianne Sabatalo, Bryn Mawr**  
msabatalo@auburn.k12.ma.us

**Kerri Astrella, Pakachoag**  
kastrella@auburn.k12.ma.us

**Sarah Lemovitz, Preschool**  
slemovitz@auburn.k12.ma.us